

Low Income Households  
without Broadband by Blockgroup

- 1 Dot = 50
- Fixed Broadband That Meets Federal Threshold
- Fixed Broadband Below Federal Threshold

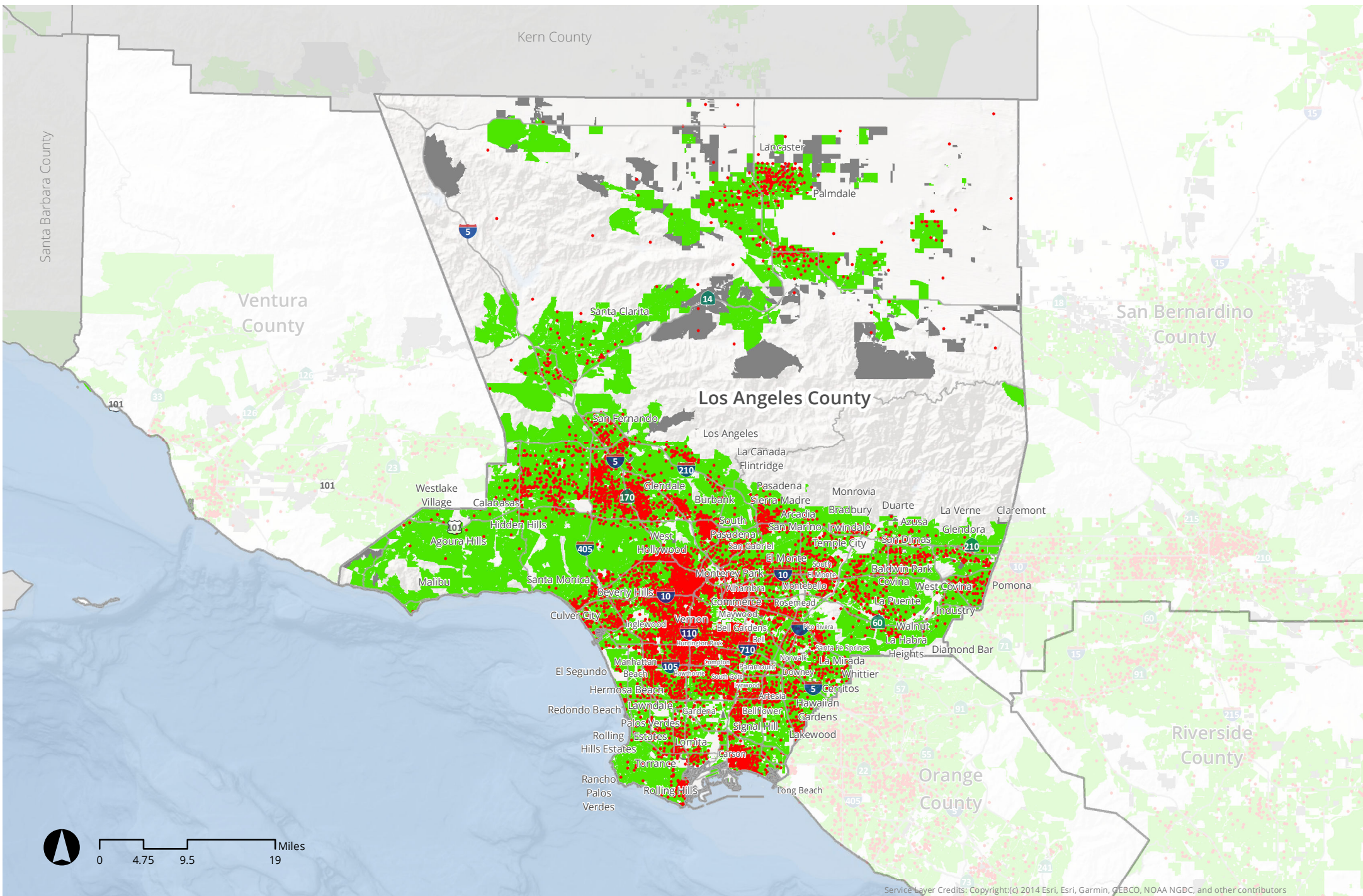
## Lower Income Households without Broadband for Imperial County



Note: Low Income households are defined by reported annual income (about \$50K) below 200% of federal poverty threshold.

Source: ACS 2015-2019 5-Year Summary File





Low Income Households  
without Broadband by Blockgroup

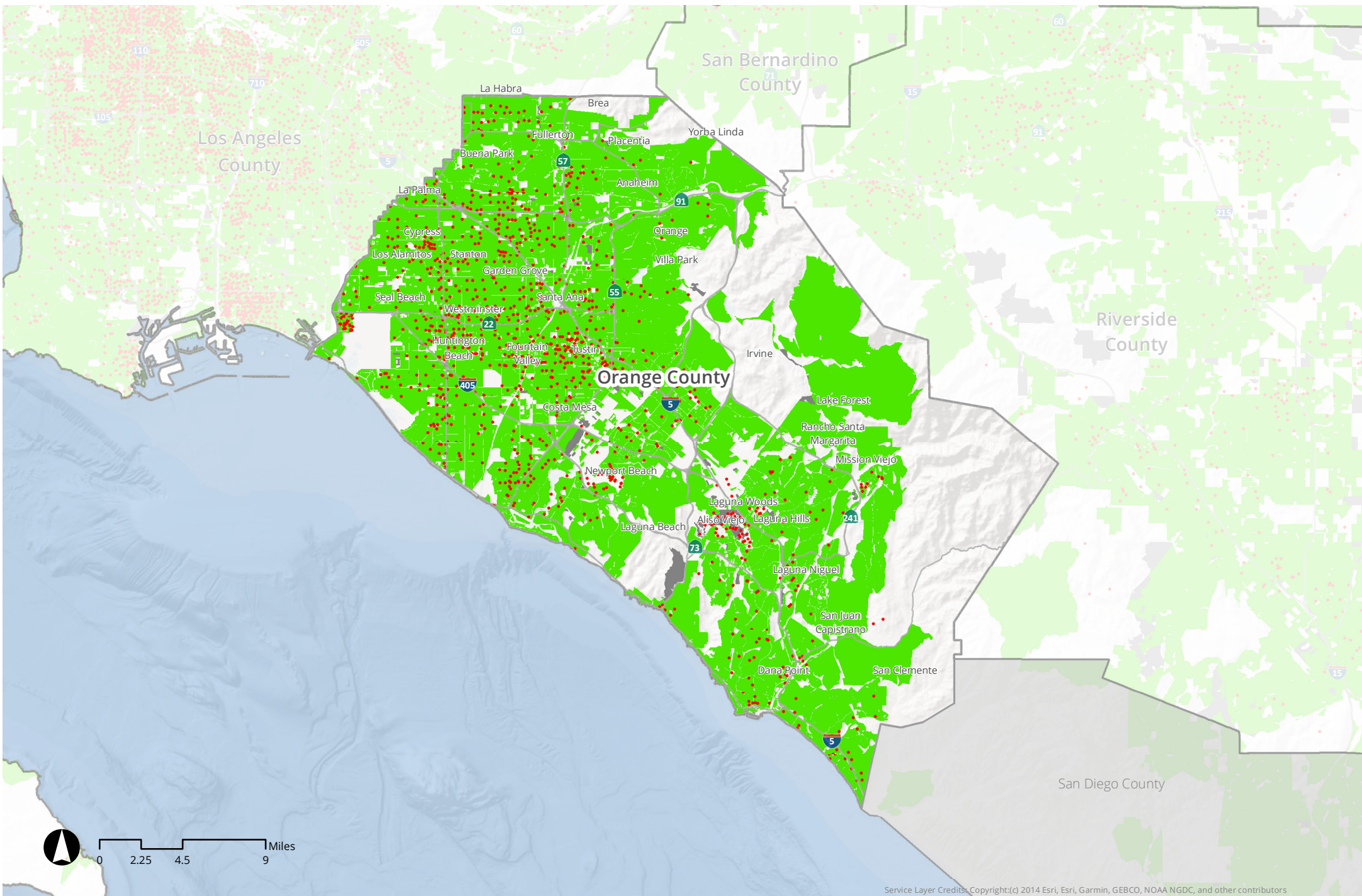
- 1 Dot = 50
- Fixed Broadband That Meets Federal Threshold
- Fixed Broadband Below Federal Threshold

## Lower Income Households without Broadband for Los Angeles County

Note: Low Income households are defined by reported annual income (about \$50K) below 200% of federal poverty threshold.

Source: ACS 2015-2019 5-Year Summary File





Low Income Households  
without Broadband by Blockgroup

1 Dot = 50

Fixed Broadband That Meets Federal Threshold

Fixed Broadband Below Federal Threshold

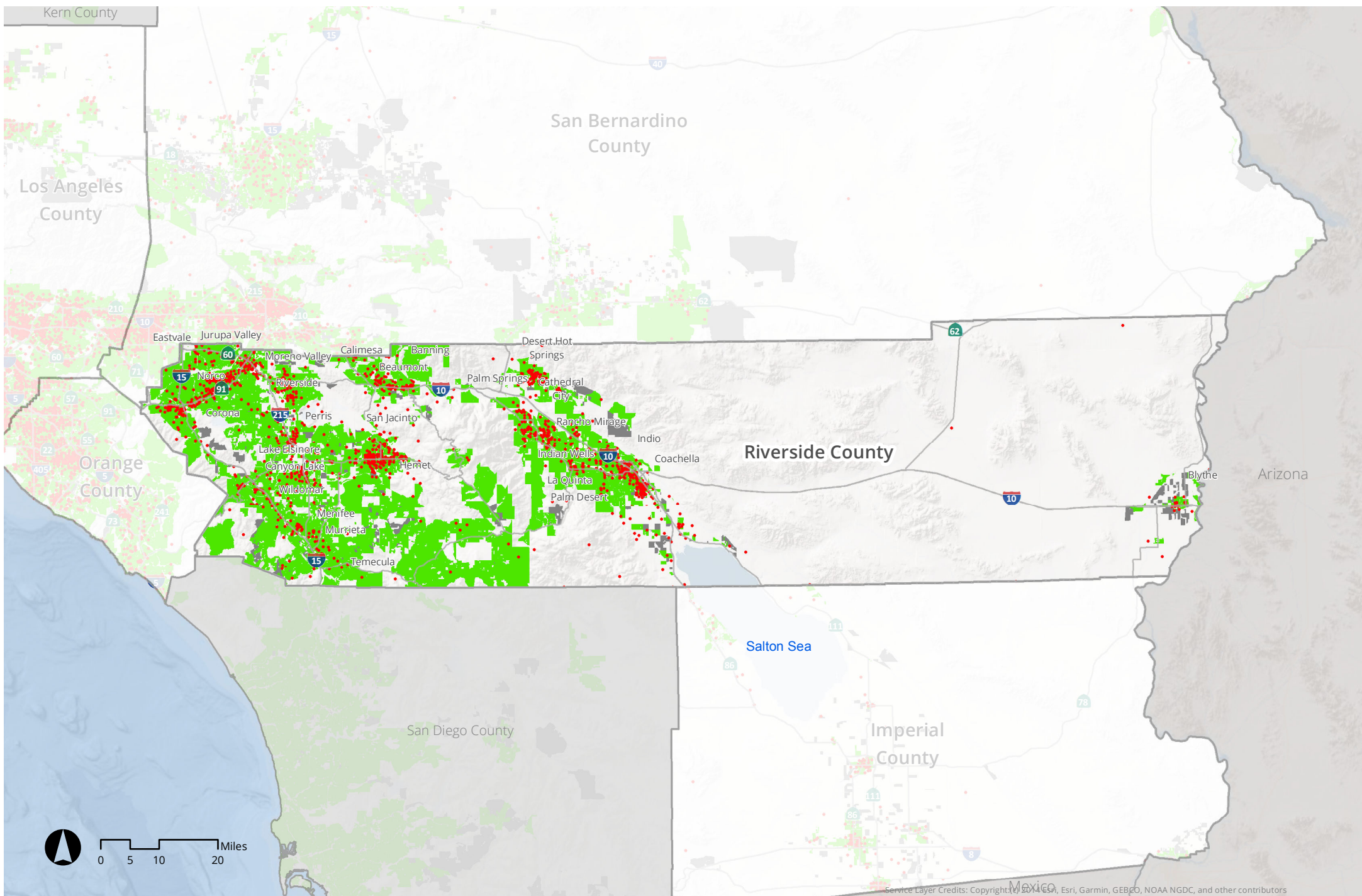
## Lower Income Households without Broadband for Orange County



Note: Low Income households are defined by reported annual income (about \$50K) below 200% of federal poverty threshold.

Source: ACS 2015-2019 5-Year Summary File





Low Income Households without Broadband by Blockgroup

- 1 Dot = 50
- Fixed Broadband That Meets Federal Threshold
- Fixed Broadband Below Federal Threshold

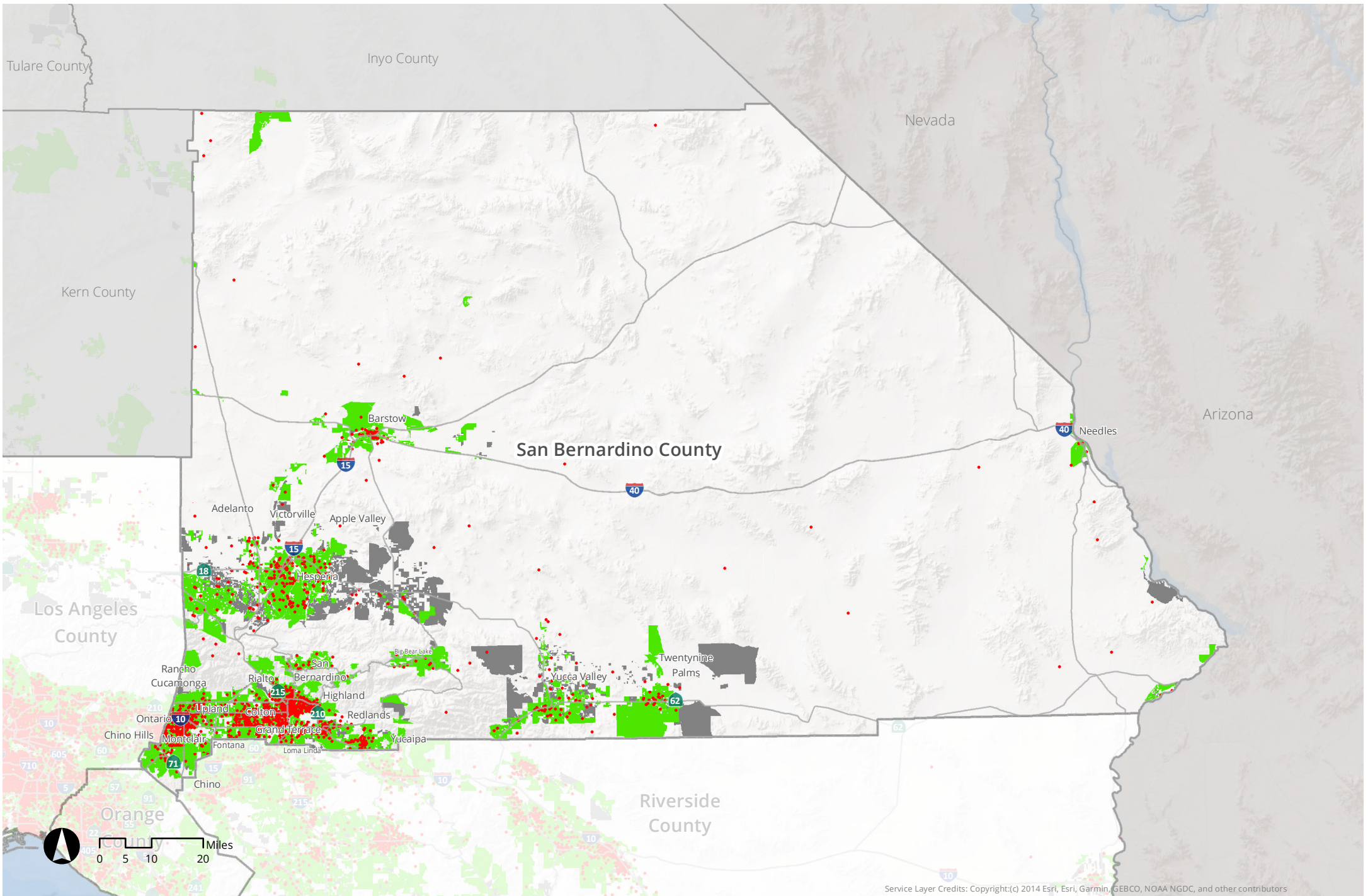
## Lower Income Households without Broadband for Riverside County

Note: Low Income households are defined by reported annual income (about \$50K) below 200% of federal poverty threshold.

Source: ACS 2015-2019 5-Year Summary File







Service Layer Credits: Copyright(c) 2014 Esri, Esri, Garmin, GEBCO, NOAA NGDC, and other contributors

Low Income Households without Broadband by Blockgroup

- 1 Dot = 50
- Fixed Broadband That Meets Federal Threshold
- Fixed Broadband Below Federal Threshold

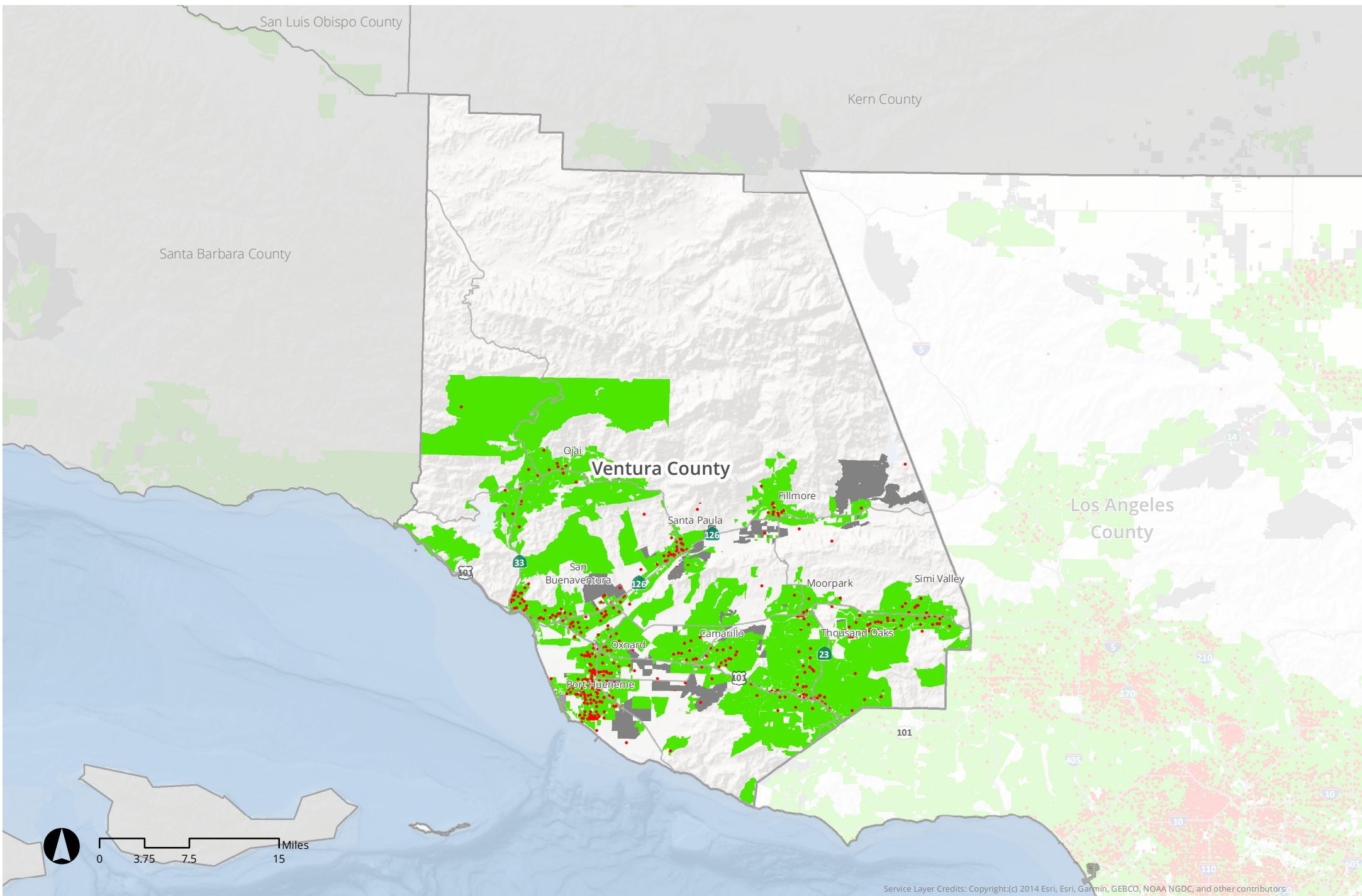
## Lower Income Households without Broadband for San Bernardino County



Note: Low Income households are defined by reported annual income (about \$50K) below 200% of federal poverty threshold.

Source: ACS 2015-2019 5-Year Summary File





Low Income Households  
without Broadband by Blockgroup

- 1 Dot = 50
- Fixed Broadband That Meets Federal Threshold
- Fixed Broadband Below Federal Threshold

## Lower Income Households without Broadband for Ventura County



Note: Low Income households are defined by reported annual income (about \$50K) below 200% of federal poverty threshold.

Source: ACS 2015-2019 5-Year Summary File